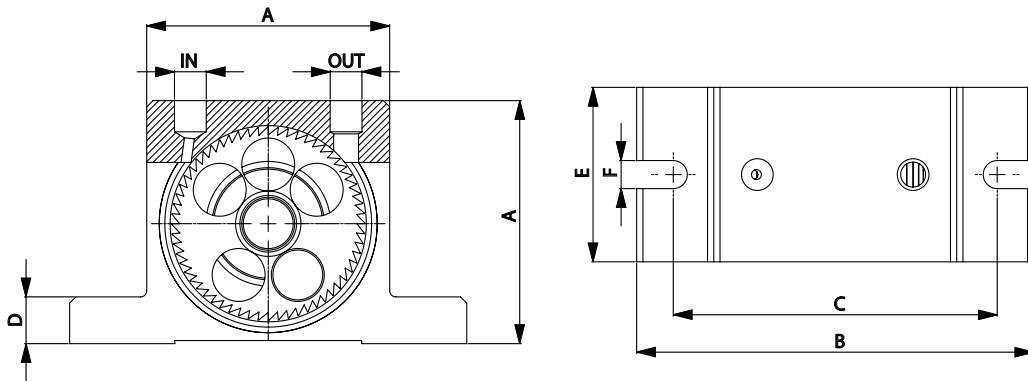


OT - Rotary pneumatic vibrators - Turbine



OVERALL DIMENSION															
Type	A		B		C		D		E		F		IN-OUT	Weight	
	mm	inch	mm	inch	mm	inch	mm	inch	mm	inch	mm	inch		kg	lbs
OT8													1/8" BSP	0.25	0.55
OT10	50	1.97	86	3.39	68	2.68	12	0.47	33	1.30	7	0.28	1/8" BSP	0.26	0.56
OT10S														0.26	0.58
OT13														0.57	1.24
OT16	65	2.56	113	4.45	90	3.54	16	0.63	42	1.65	9	0.35	1/4" BSP	0.58	1.28
OT16S														0.61	1.35
OT20														1.09	2.40
OT25	80	3.15	128	5.04	104	4.09	16	0.63	56	2.20	9	0.35	1/4" BSP	1.12	2.46
OT25S														1.20	2.64
OT30														2.20	4.84
OT36	100	3.94	160	6.30	130	5.12	20	0.79	73	2.87	11	0.43	3/8" BSP	2.30	5.06
OT36S														2.53	5.57



FEATURES																
Type	Vibration			F.c. max						Air consumption						
	Vpm			2bar = 29psi		4bar = 58psi		6bar = 87psi		2bar = 29psi		4bar = 58psi		6bar = 87psi		
	2bar = 29psi	4bar = 58psi	6bar = 87psi	kg	lbs	kg	lbs	kg	lbs	l/min	CF/min	l/min	CF/min	l/min	CF/min	
OT8	34000	38000	42000	110	242	205	451	292	641	45	1.6	81	2.9	110	3.9	
OT10	26000	33000	38000	105	231	171	377	252	554	45	1.6	81	2.9	110	3.9	
OT10S	17200	23400	26000	72	159	147	323	187	410	45	1.6	81	2.9	110	3.9	
OT13	24500	28500	31000	202	444	263	579	300	659	122	4.3	204	7.2	285	10.1	
OT16	18000	20000	21000	194	427	239	527	264	581	122	4.3	204	7.2	285	10.1	
OT16S	11500	15000	17500	129	285	196	431	234	516	122	4.3	204	7.2	285	10.1	
OT20	14500	19000	23000	251	552	404	888	526	1157	184	6.5	318	11.2	452	16.0	
OT25	13200	15500	17000	244	537	336	740	508	1117	184	6.5	318	11.2	452	16.0	
OT25S	9000	11000	13500	214	471	335	738	483	1063	184	6.5	318	11.2	452	16.0	
OT30	11000	12500	14500	351	771	721	1586	781	1718	322	11.4	542	19.1	749	26.5	
OT36	8500	11500	12000	341	751	698	1536	749	1648	322	11.4	542	19.1	749	26.5	
OT36S	6000	7000	8500	406	893	706	1554	754	1660	322	11.4	542	19.1	749	26.5	

OT - ROTARY PNEUMATIC VIBRATORS - TURBINE

APPLICATION Hopper and silo - screen - vibrating table - chute - concrete consolidation

POWDER Dry and granular [food] - concrete

PROBLEM SOLVING Friction reduction - separation - consolidation

FEATURES

DUTY CYCLE Continuous

WORKING PRESSURE From 2 bar to 6 bar (from 29 psi to 87 psi)

PNEUMATIC CIRCUIT Filter + flow control valve + lubrication + 3/2 ways valve

AIR SUPPLY QUALITY Class 5.4.1.

WORKING TEMPERATURE From -20°C to 120°C (from -4°F to 248°F)

MAX NOISE LEVEL <90 dB(a)

TECHNOLOGY Turbine vibration - high frequency and centrifugal force

ATEX II 2D CT(X) / II 2G CT(X)

MATERIAL Aluminium body